

JUNE 30, 2023

The logo features a stylized 'R' composed of overlapping teal, dark blue, and grey segments. A purple circle is positioned at the top left of the 'R'. The word 'Ramp' is written in a dark blue, sans-serif font to the right of the 'R'.

Ramp

SATO PRINTER SETUP

RAMP
www.ramprfid.com.au
Copyright © 2023, Ramp Holdings Pty Ltd.

Contents

Introduction	2
Power & Communications	3
Powering the Printer	3
Establishing Communication with the Printer	3
Consumables Installation	4
Loading Label Media	4
Loading Ribbon Media	5
Software Installation	6
Printer Driver Installation	6
Loca.fi Print Installation	8
Import Configurations and Templates	10
Import Configurations	10
Import Templates	11
Logging In	12

Introduction

This manual provides detailed instruction for the initial configuration of the SATO RFID printer upon receipt. The procedures outlined include steps for establishing power and connectivity, the installation of requisite drivers for effective printer communication, and the installation of the specified printing software for accurate template printing.

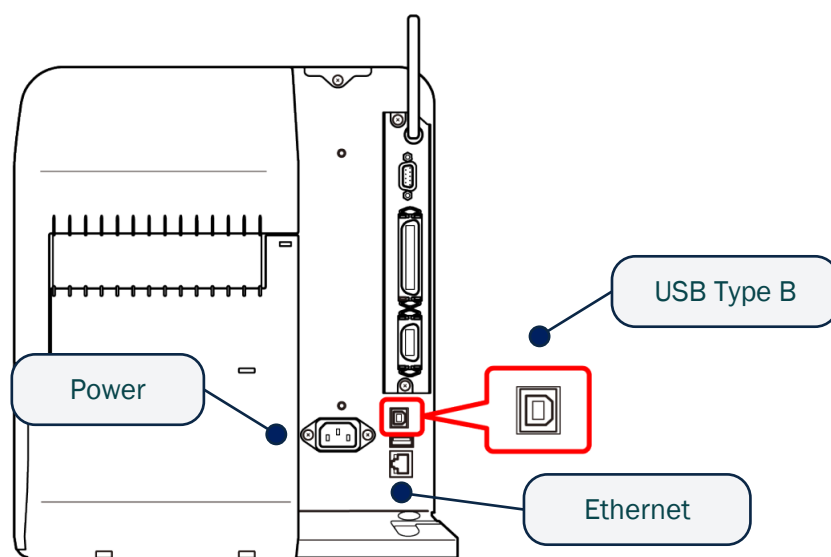
Please note that this manual does not elaborate on the process of loading or changing the label and thermal ribbon rolls, or any other physical attributes of the printer excluding power and communication. For instructions concerning these elements of the printing process, we recommend reading the *SATO PRINTER PHYSICAL HANDLING* guide.

Power & Communications

Powering the Printer

Behind the printer will be an array of ports intended for power and connectivity. Power can be supplied to the printer via the included IEC C13 power cable which should be connected and attached as shown, with the other end of the cable connected to a standard wall power socket.

Pressing and holding the power button for 3 seconds located at the front of the printer will turn the device on and off.



Establishing Communication with the Printer

In order to facilitate interaction between your device and the printer, either the USB Type B port or Ethernet port will be used to facilitate the connection.

To connect your device directly to the printer, the user can use either the USB Type B or Ethernet port into the corresponding USB or Ethernet port of the PC.

- If using USB, connect the USB Type B end to the USB Type B port on the printer and the USB Type A end to the USB type A port on the PC.
- If using Ethernet, connect the Ethernet connector to the printer and the other Ethernet connector to the RJ-45 port on the PC.

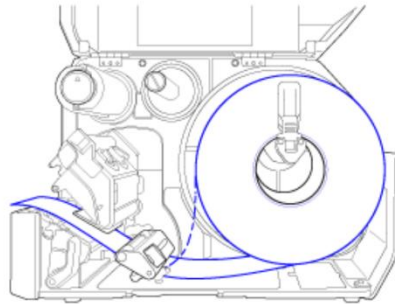
Additionally, the printer can be connected an existing network via the Ethernet port. Doing so will allow all devices on the network to connect with the printer.

- Connect the Ethernet connector to the printer and the other Ethernet connector to an existing network switch or RJ-45 port. The PC should be connected to the same network via the Wi-Fi infrastructure or via an ethernet connection.

Consumables Installation

Loading Label Media

To load the media label, follow the *Face Out Media* path when installing the label media.



— Face-in media

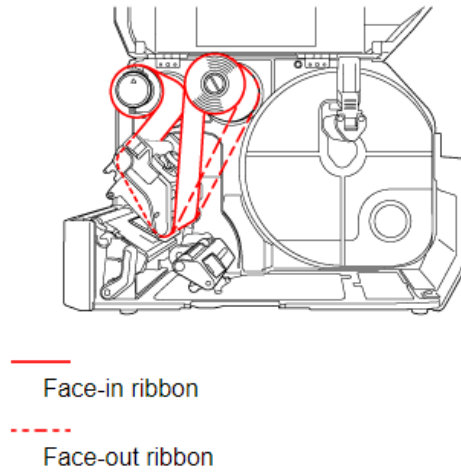
- - - Face-out media

Follow the video for an in-depth procedure.

<https://youtu.be/-Yw4sQOrPF8>

Loading Ribbon Media

To load the thermal ribbon label, follow the *Face Out Ribbon* path when installing the thermal ribbon.



Follow the video for an in-depth procedure.

<https://youtu.be/ucft5dAzBzM>

Software Installation

Printer Driver Installation

Prior to using the software, the printing drivers will need to be installed on the machine to allow communication between the printer and the computer. Follow the steps below to install the drivers required.

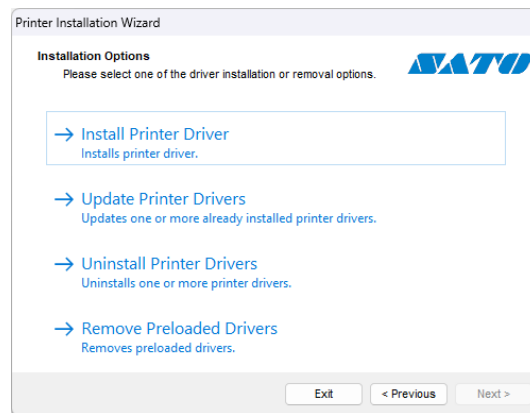
1. Download the drivers from the following link:

https://www.sato-global.com/files/Printer_Drivers/Windows_Printer_Driver/SATO_Driver.zip

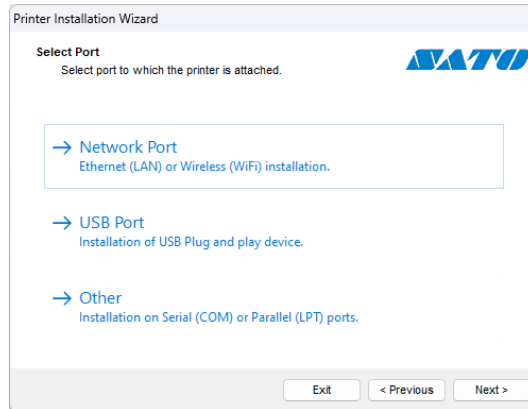
2. Once downloaded, extract the file to a folder of your location on your machine.
3. Open the *PrnInst.exe* file to begin the installation process.

Common	11/07/2023 2:26 PM	File folder	
Tools	11/07/2023 2:26 PM	File folder	
Win32	11/07/2023 2:26 PM	File folder	
Win64	11/07/2023 2:26 PM	File folder	
PrnInst.exe	11/07/2023 2:26 PM	Application	2,501 KB
Sato.cat	11/07/2023 2:26 PM	Security Catalogue	73 KB
Sato.inf	11/07/2023 2:26 PM	Setup Information	39 KB

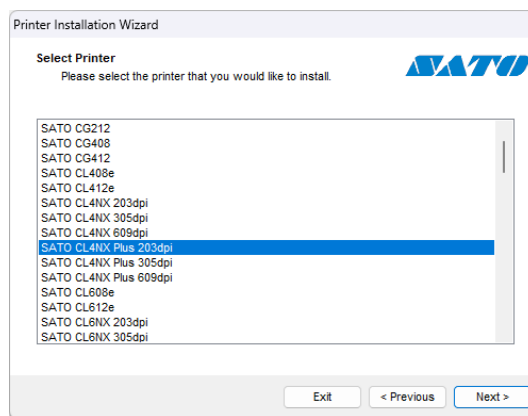
4. Follow the on-screen wizard to continue the installation process.



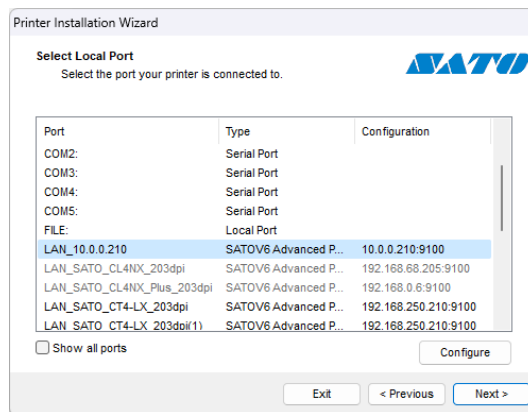
5. When selecting a port, select the corresponding option based on how you've connected the machine to the printer.
 - a. If connecting via Ethernet, select the *Network Port*.
 - b. If connecting via USB, select the *USB Port*.



6. Select the printer type “CL4NX Plus 203 DPI” to continue.



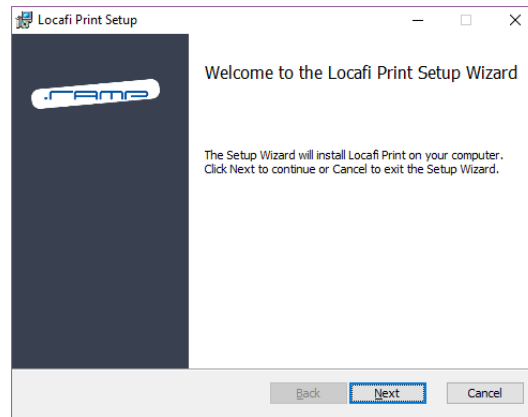
7. If connecting via Ethernet, you will be required to select a network port to connect to.
a. If the port is not available, create a port using the set IP address of the printer.



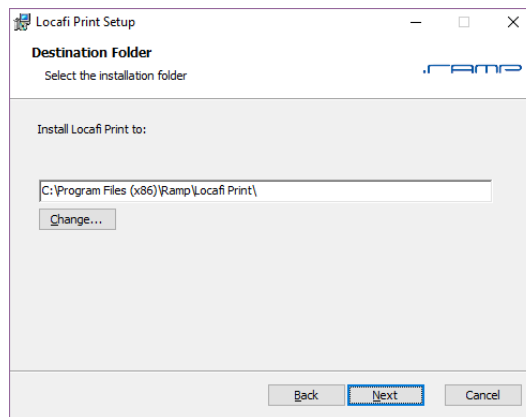
Loca.fi Print Installation

This section will cover the installation process of the Loca.fi application that is responsible for printing RFID tags with the RFID printer. The Loca.fi Print application is a Windows Native application that will need to be installed prior to being used. The installation process assumes that you have access to the installation files required.

1. Locate the Loca.fi Print Installer and **double-click** the file to launch.
2. The installer wizard will launch. **Click Next** to continue.

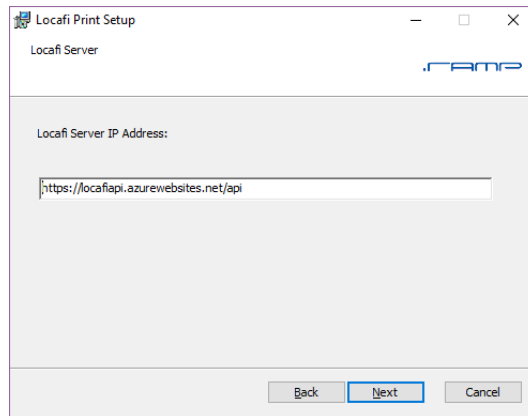


3. Select the destination folder to where the application will be installed. By default, it'll be installed to the following directory:
 - a. C:\Program Files (x86)\Ramp\Locafi Print

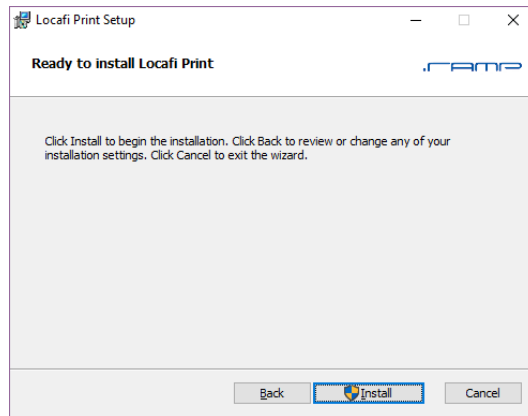


4. Configure the Server URL. This will be dependent on which server that RAMP has configured your accounts to point to. The options are as follows:
 - a. <https://locafiapi.azurewebsites.net/api>
 - b. <https://locafi-retail-api.azurewebsites.net>

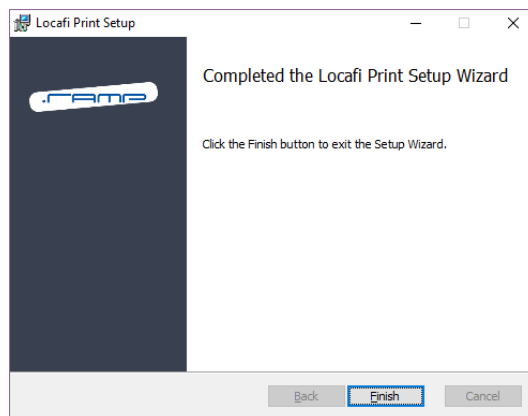
- c. <https://locafi-gov-api.azurewebsites.net>



5. Click install to continue the installation process.



6. Click **Finish** to complete the installation.



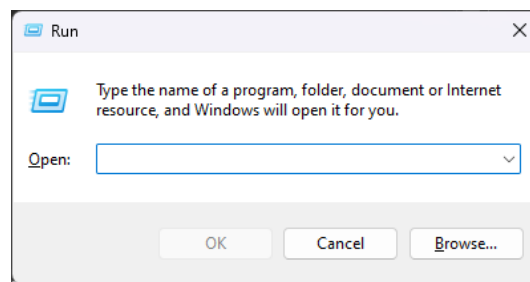
Import Configurations and Templates

Import Configurations

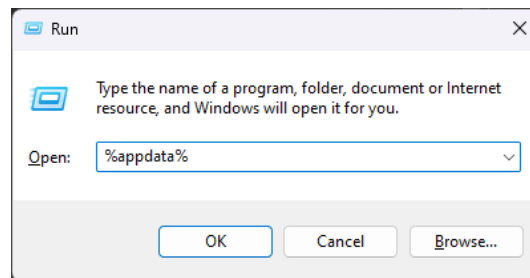
This section will cover the process of copying or transferring the Loca.fi settings and configurations from one machine to another. Doing so will ensure that settings remain intact when being transferred, or the desired settings can be stored and applied to multiple machines at once.

The import process will assume you have prior access to the configuration files. However, the steps mentioned will provide access to these configuration files for backup or for transfer.

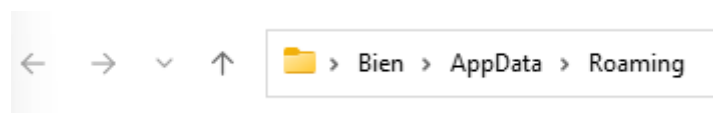
1. Open the *Run* command or press **CTRL + R** to quickly open the command.



2. Type in **%appdata%** into the field, then press **OK**.



3. The *roaming* folder will be opened. Navigate to the *appdata* folder by either clicking on **AppData** in the address bar or pressing the **↑** icon adjacent to the address bar.



4. Navigate to the *Local* folder, followed by the Locafi Print folder.
5. A list of .json files will be found within this folder.
 - a. To transfer these files to another machine, highlight the files and create a copy in the desired location.
 - b. To replace these settings with the settings from another machine, highlight the files in this folder and delete them prior to pasting the replacement files.

Import Templates

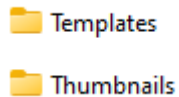
This section will cover the process of copying or transferring label templates from one machine to another. Doing so will ensure that the same label template can be used across multiple machines and ensure the labels are consistent.

The import process will assume you have prior access to the templates. However, the steps mentioned will provide access to these templates for backup or for transfer.

1. Navigate to the following folder directory: C:\RfidPrinter



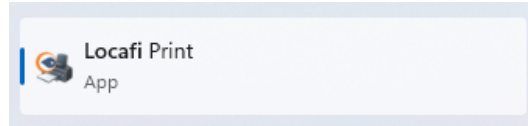
2. Navigate to the *Templates* folder.
 - a. If the *Templates* folder isn't present, create the folder with the *Templates* name.



3. A list of .lfpt files will be found within this folder.
 - a. To transfer the templates to another machine, highlight the .lfpt files and create a copy in the desired location.
 - b. To replace the templates or import templates, paste the replacement .lfpt files into this folder.

Logging In

1. Search for the Locafi Print application in the start menu and open the app, or double click on the icon from the Desktop if it's there.



2. Enter the **Username** and **Password** in the fields provided and **click** the Login button



3. If your credentials are incorrect, or there are other factors that result in the user not being authenticated, an appropriate error message will be displayed, as shown below.

