

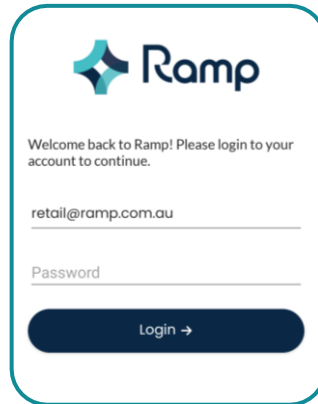
Ramp

How to Guide

Performing a Stock
Adjustment

1 Log into the Device

Enter your given username and password into the respective fields. Tap on the **Login** button to access the device.



The screenshot shows the Ramp login interface. At the top is the Ramp logo. Below it is a welcome message: "Welcome back to Ramp! Please login to your account to continue." There are two input fields: one for the email address "retail@ramp.com.au" and one for the password. At the bottom is a dark blue button labeled "Login →".

2 Open Stock Management

To navigate to the stock adjustment function, tap on the **Stock Management** tile.



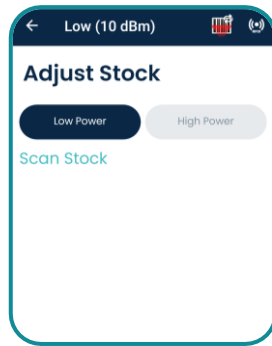
3 Open Adjust Stock

Continue navigating to the stock adjustment function by tapping on the **Adjust Stock** tile.



4 Adjusting Power Levels

You'll have the option to select between a high and low power level before starting. These values can be adjusted within the settings.



5 Scanning Items

Tap the Trigger quickly on the handheld to begin scanning items.

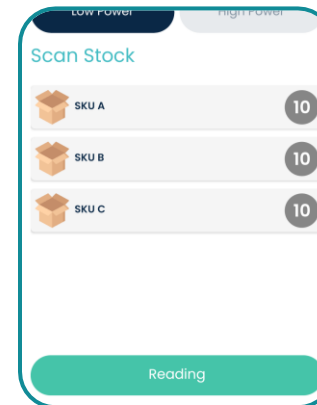
The bottom of the screen will show **Reading** to indicate the handheld is scanning.



Reading

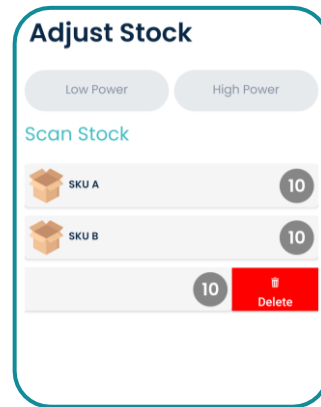
6 SKU Information

As items are scanned, the SKUs will appear on the list. If different SKUs are scanned, each new SKU will show and the quantity of that SKU will be shown.



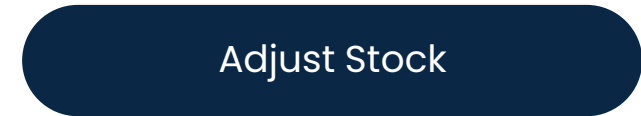
7 Delete Items

To delete SKUs that were accidentally scanned, **swipe left** on the SKU and select **Delete**.



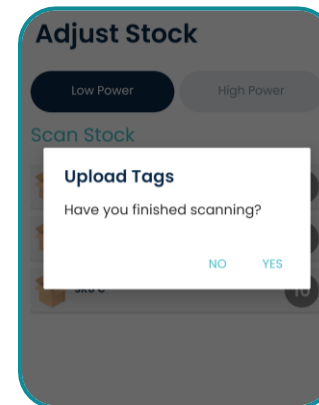
8 Adjust Stock

Once scanning is complete, **tap the trigger quickly** to stop scanning. Tap on **Adjust Stock** to continue.



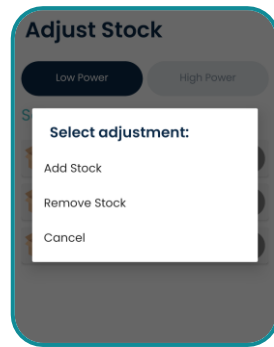
9 Upload Confirmation

Upon tapping **Adjust Stock**, you will be prompted to confirm if you've finished scanning. Tap **Yes** to continue.



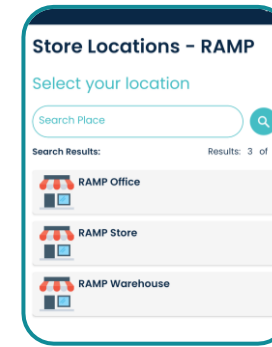
10 Add or Remove Stock

You will be then prompted to either add or remove the scanned stock from the system. To add stock, select the **Add Stock** option. To remove stock, select the **Remove Stock** option.



11 Adding Stock

If adding stock, you will be prompted to select a location to add to. Upon selecting a location, a confirmation message will be shown that the stock has been added.



12 Removing Stock

If removing stock, a confirmation message will be shown to show that the stock has been removed.